

THE **Wentworth**  eekly

**It's Easter Time**

**SPRING BLOOM & COLOR**

**FLOWERING ORNAMENTAL TREES**



**WEeping  
CHERRY**



**TULIP  
MAGNOLIA**



**PURPLE LEAF  
PLUM**

**FLOWERING COLOR SHRUBS**



**SNOWBALL  
VIBURNUM**



**LILAC**



**FORSYTHIA**

 **WENTWORTH GROWN**



**EASTER LILY**



**HYDRANGEA**



**MIXED HANGING  
BASKETS**



**Wentworth Nursery**

**Winter Hours:**  
Mon.-Fri. 9-6, Sat & Sun. 9-5  
Sale Ends 4-11-23

**Prince Frederick Garden Center**  
1700 Solomon's Island Rd,  
Prince Frederick, MD  
410-535-3664 • 866-535-3664

**Oakville Garden Center  
& Landscape Project Center**  
41170 Oakville Road, Mechanicsville, MD  
301-373-9245 • 800-451-1427

**WentworthNursery.com**

**ShopWentworthNursery.com**



# LAWN & GARDEN ESSENTIALS

## Natural Wallstone

Only  
**\$348**

When You  
Buy 2 or  
More.



## GreenView Green Smart

Weed & Feed  
5,000 sq. ft. bag

Only **\$23<sup>88</sup>** ea.

15,000 sqft. bag

Only **\$59<sup>88</sup>** ea.



## Espoma

Raised  
Garden Soil

1.5 cu.ft. bag

Only  
**\$12<sup>88</sup>** ea.



Espoma  
Bio Tone  
4 lb bag

Only  
**\$7<sup>88</sup>** ea.



## Miracle Gro Potting Soil

1 cuft Bag

**\$10<sup>88</sup>** ea.



Espoma  
Holly-Tone  
18 lb bag

Only  
**\$17<sup>88</sup>** ea.

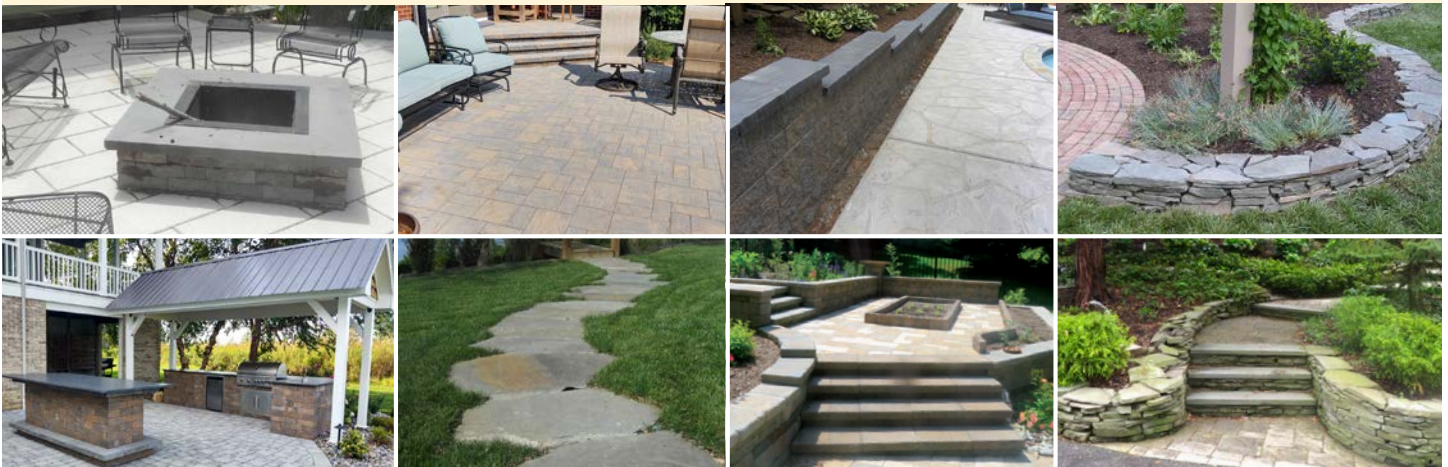


## LANDSCAPE DESIGN BUILD

***Need better curb appeal, privacy, or more color in your landscape?***

Call today to get your landscape re-designed and take a fresh look at creating an enduring and colorful landscape, with balance, structure, scale, and unity.

*Walks • Walls • Ponds • Patios • Raised Planters • Gardens • Terraces  
Fire Pits • Columns • Outdoor Kitchens • Much More!*



## LANDSCAPING SERVICES

- Core Aeration
- Slice Seeding
- Organic Compost
- Over-Seeding
- Top Soiling
- Grading
- Pavers & Flagstone
- Retaining Walls
- Pruning & Renovating
- New Planting & Color
- Walkways & Patios
- Spring Clean-Up & Mulching

**Call to schedule a Consultation**  
**1-800-451-1427 [WentworthNursery.com](http://WentworthNursery.com)**